



# **KGL Sim Racing: Stream Deck Mount**



## **Instructions**

# 1. Table of contents

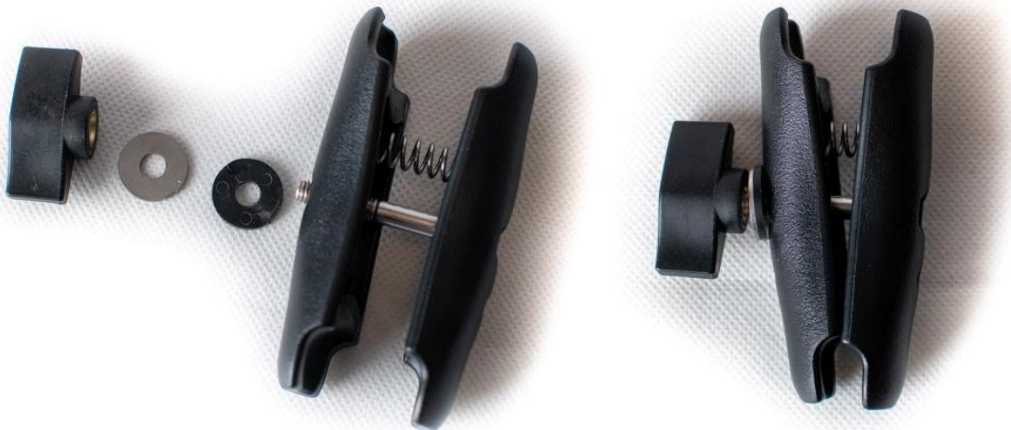
- 1. Table of contents .....2
- 2. Elgato Software.....3
- 3. RAM mount assembly .....3
- 4. Stream Deck XL mount .....4
  - 4.1. Remove plastic protection coating from front and back .....4
  - 4.2. Attach B-ball mount to magnetic plate .....4
- 5. Stream Deck Mk2 .....5
  - 5.1. What’s included: .....5
  - 5.2. Remove original front cover from stream deck.....6
  - 5.3. KGL housing assembly .....6
- 6. Stream Deck+ .....11
  - 6.1. Assembly instructions: .....11

## 2. Elgato Software

In order to start using your stream deck, refer to the website of Elgato to get the needed software installed on your pc. [Click Here](#).

## 3. RAM mount assembly

Insert the bolt through both halves and tighten everything together, make sure to place the plastic washer first, followed by the metal washer. For the 95mm arm, make sure the spring is mounted correctly. Refer to the picture below for proper assembly:



*Figure 1: 95mm arm pieces + assembled*



*Figure 2: 65mm arm assembled*

## 4. Stream Deck XL mount

### 4.1. Remove plastic protection coating from front and back



### 4.2. Attach B-ball mount to magnetic plate

When attaching the b-ball mount to the magnetic plate, make sure to use the **SILVER bolts**, these are shorter compared to the included black bolts.

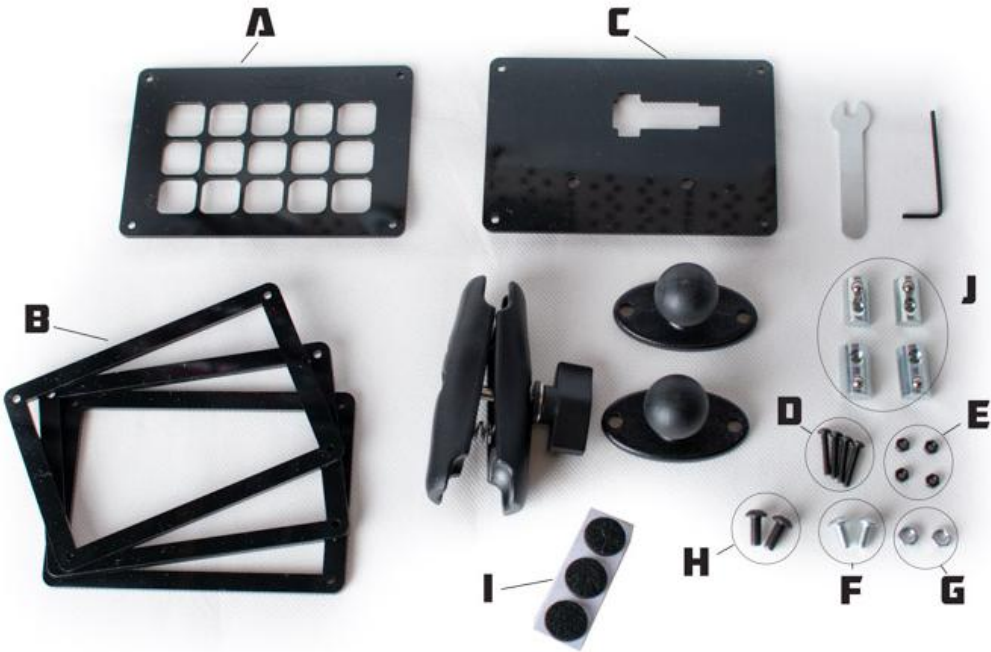
**WARNING: DO NOT USE THE BLACK BOLTS TO ATTACH THE B-BALL MOUNT TO THE MAGNETIC PLATE, THIS WILL DAMAGE THE MAGNETIC PLATE!!!**



# 5. Stream Deck Mk2

## 5.1. What's included:

- A) KGL Front plate
- B) 3 x KGL Mid plate
- C) KGL Back plate
- D) 4 x M3 bolts
- E) 4 x M3 nuts
- F) M5 bolts silver (short)
- G) M5 low profile nuts
- H) M5 bolts black (longer)
- I) Adhesive felt patches



## 5.2. Remove original front cover from stream deck

- 1) First remove the original housing from the Stream Deck by carefully pulling underneath the retainer clips:



[More steps can be found on the website of Elgato \(click here\)](#)

- 2) Once the front cover is removed, take the back plate off as well so you are left with only the stream deck without housing.

## 5.3. KGL housing assembly

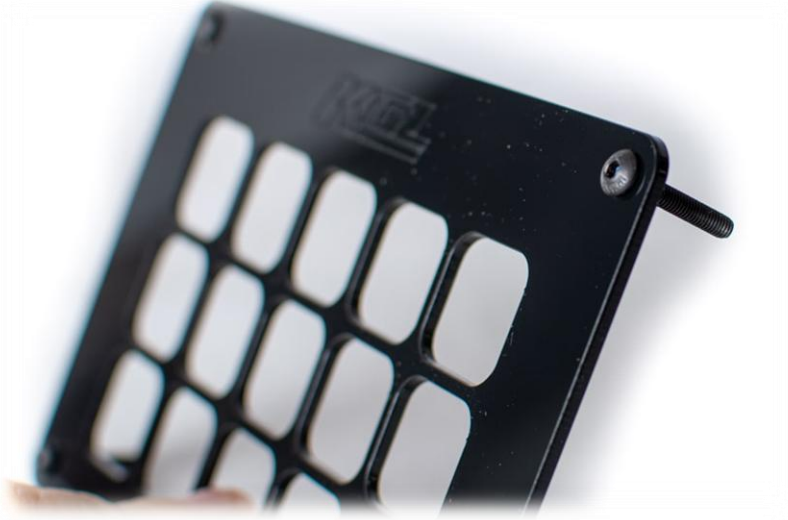
- 1) Remove the protection layers

Both the front side of part A and the back side of Part C have a protection layer, remove these first.



2) Slide the M3 bolts (part D) through the front of plate A

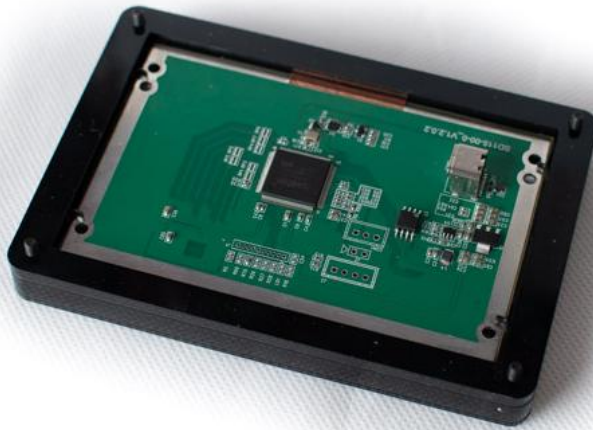
The front of Part A is the side where the KGL logo is engraved



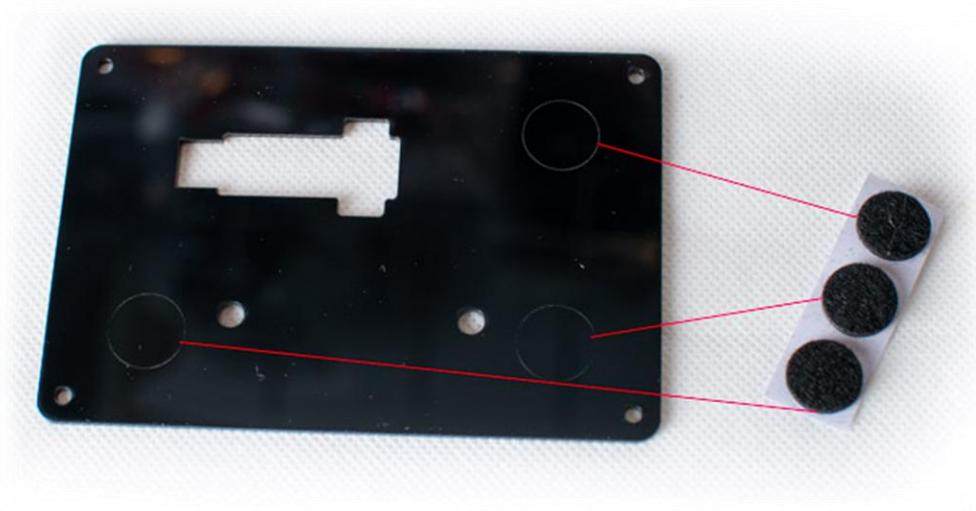
3) Now take the 3 mid parts (part B) and slide them over the M3 bolts



4) Insert the Stream Deck in the housing:



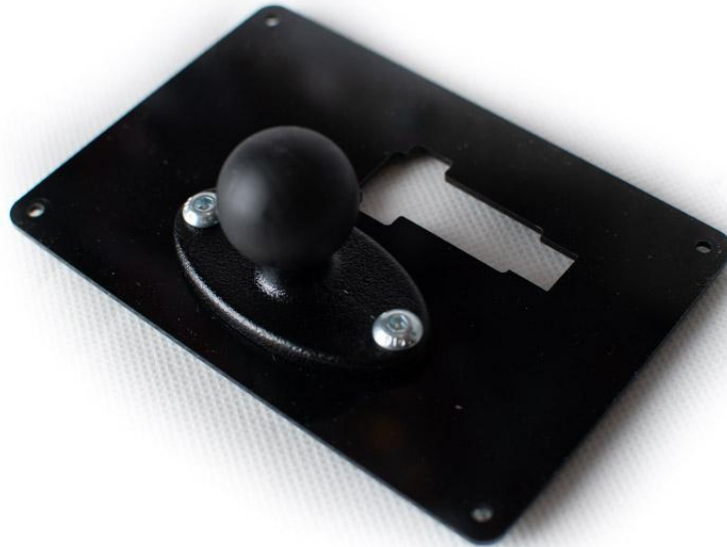
5) Put the felt patches on the inside of Part C in the marked area's



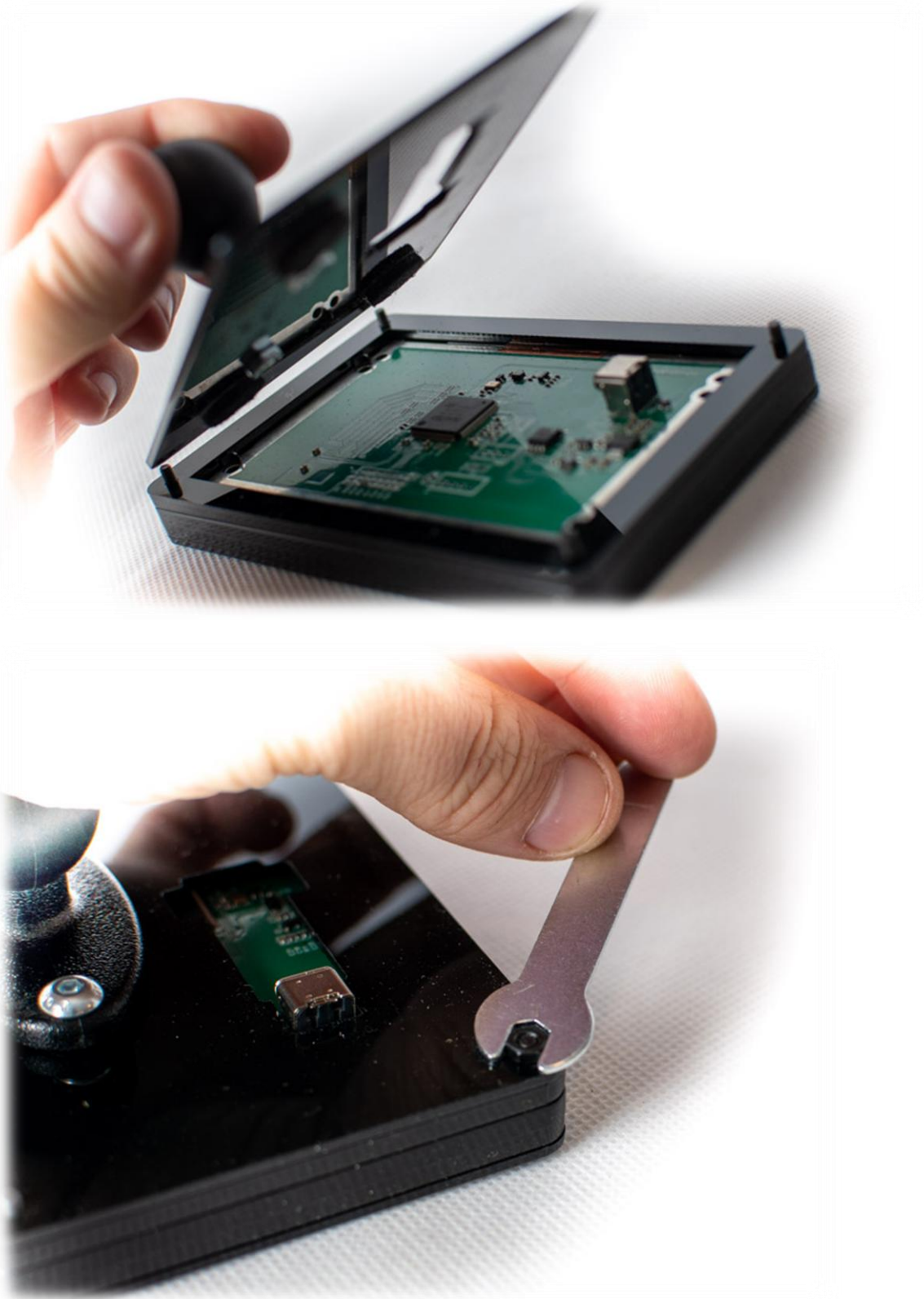
6) Attach the B-ball mount to the back plate (Part C)

Use the **SILVER BOLTS** (part F) and low profile nuts (part G) to attach the b-ball to the back plate.

**WARNING: DO NOT USE THE BLACK BOLTS FOR THIS PART SINCE THIS MIGHT DAMAGE THE STREAM DECK! THE BLACK BOLTS ARE TOO LONG FOR THIS!**



- 7) Put the back cover on the rest of the assembly and use the M3 nuts (part E) to close the housing.



# 6. Stream Deck+

## 6.1. Assembly instructions:

- 1) Attach the b-ball mount to the back of the KGL mount using the provided silver M5 bolts:



- 2) Remove the screws from the bottom of the original mount:



3) Attach the KGL mount to the Stream Deck+ with the same screws you just removed in step 2:

